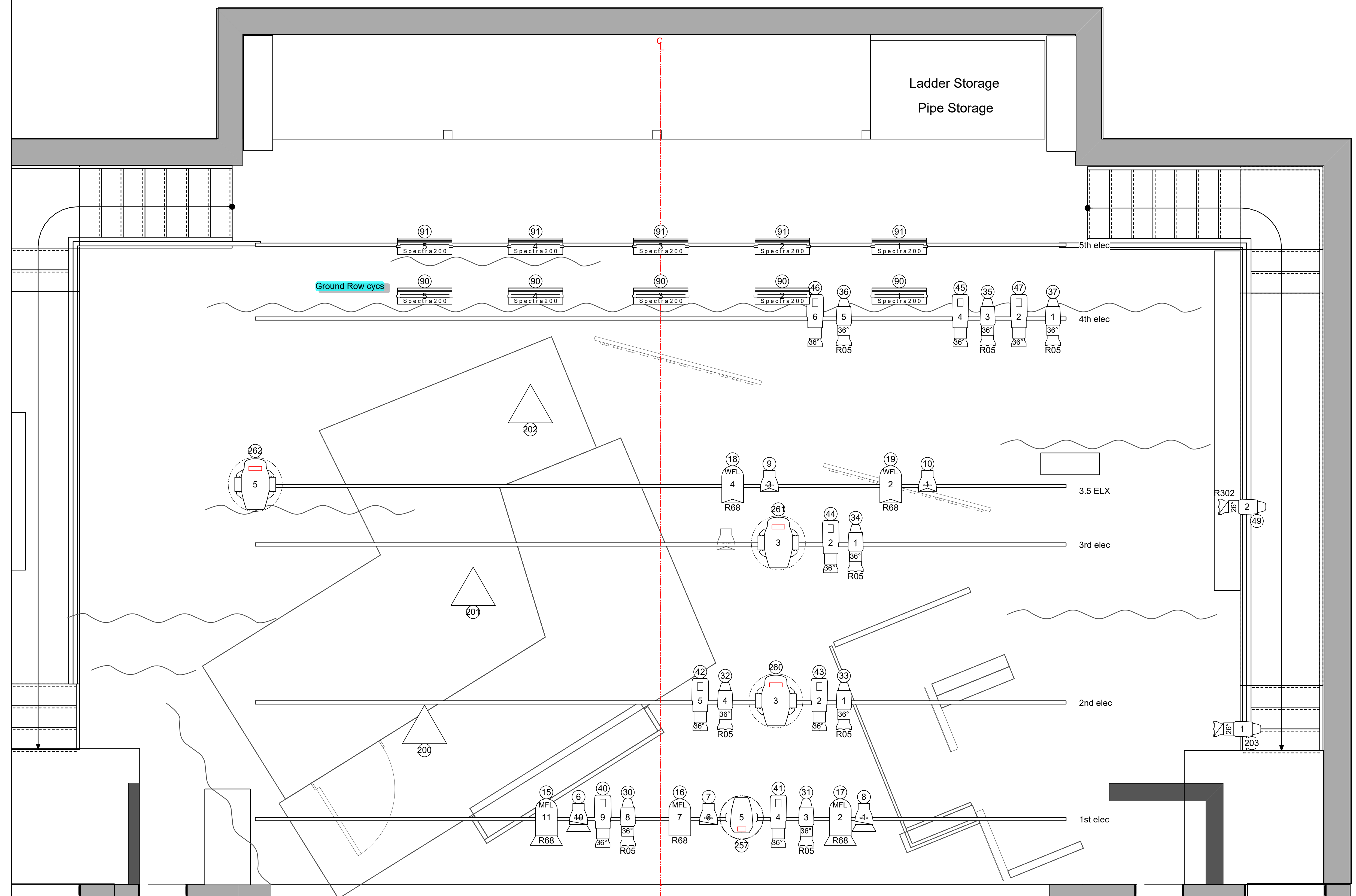
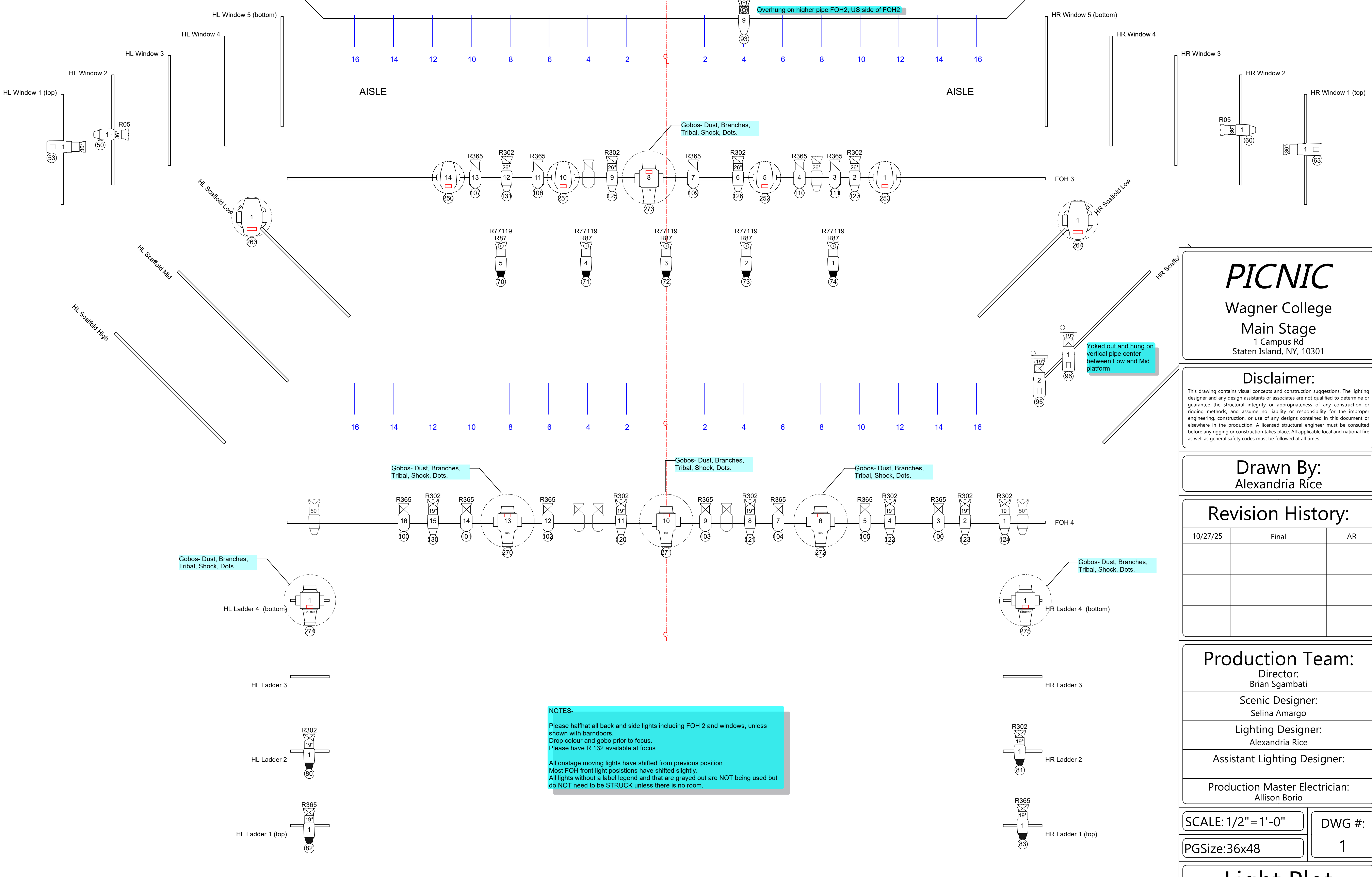


Symbol Key

- Light**
 - Altman 360Q 4.5 x 6
 - Altman 360Q 6x9
 - Altman 360Q 6x12
 - Altman 360Q 6x16
 - Altman PAR 64 WFL
 - Altman PAR 64 MFL
 - ETC D40 Lustr SELR45
 - ETC D40 Lustr SELR35
 - ETC Source4 50deg
 - ETC Source4 36deg
 - ETC Source4 26deg
 - ETC Source4 19deg
 - ETC Source4 19deg 750W
 - ETC Source 4 36deg 750 W
 - Altman Phoneix LED 19 deg
 - Altman Phoneix LED 26 deg
 - Altman Phoneix LED 36 deg
 - Altman Phoneix LED 50 deg
 - Altman Spectra 200
 - USITT Practical
- Moving Light**
 - ETC Releve Spot
 - Varilite VL 1000- Iris
 - Varilite VL 1000- Iris
 - Varilite VL 1000- Shutters
- Static Accessory**
 - 7.5in 4 Leaf Barn Door
 - 10in Barn Door
 - Iris
 - S4A Template Holder
 - GAM Film FX Clouds
- Typical**



28' 4" CYC
27'-6"
26' 6"
25' 4" 5th ELECTRIC 22'
23'-0"
22' 0" 4th ELECTRIC 22'
20' 6"
19' 0"
17' 10"
16' 10" Legs
CW 15' 6" 3.5 ELECTRIC 22'
14' 4" Legs
13' 0" 3rd ELECTRIC 22'
11' 0"
10' 0" Legs
9' 0" Legs
8' 6"
7' 0" 2nd ELECTRIC 23'
6' 0"
5' 6"
4' 9"
3' 6"
2' 6" 1st ELECTRIC 23'
1' 3"
3"



PICNIC
 Wagner College
 Main Stage
 1 Campus Rd
 Staten Island, NY, 10301

Disclaimer:
 This drawing contains visual concepts and construction suggestions. The lighting designer and any design assistants or associates are not qualified to determine or guarantee the structural integrity or appropriateness of any construction or rigging methods, and assume no liability or responsibility for the improper engineering, construction, or use of any designs contained in this document or elsewhere in the production. A licensed structural engineer must be consulted before any rigging or construction takes place. All applicable local and national fire as well as general safety codes must be followed at all times.

Drawn By:
 Alexandria Rice

Revision History:

10/27/25	Final	AR

Production Team:
 Director:
 Brian Sgambati
 Scenic Designer:
 Selina Amargo
 Lighting Designer:
 Alexandria Rice
 Assistant Lighting Designer:

Production Master Electrician:
 Allison Borio

SCALE: 1/2" = 1'-0" DWG #: 1
 PGSize: 36x48

NOTES-
 Please halfhat all back and side lights including FOH 2 and windows, unless shown with barndoors.
 Drop colour and gobo prior to focus.
 Please have R 132 available at focus.
 All onstage moving lights have shifted from previous position.
 Most FOH front light positions have shifted slightly.
 All lights without a label legend and that are grayed out are NOT being used but do NOT need to be STRUCK unless there is no room.

Light Plot